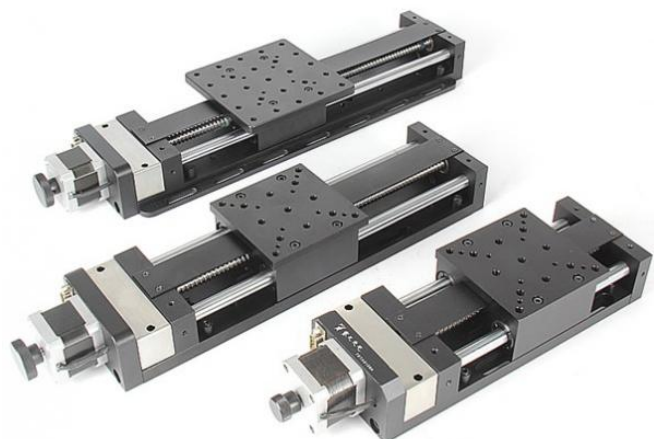


## 7STA01B Motorized Precision Translation Stages



### Characteristics

- Equipped with a stepping motor and a standard DB9 plug, 7SC series motion controllers for automatic control;
- Driving by high quality ball screw rod, good repeatability, long life;
- Screw rod adopts three bearing mounting structure, locking the end of axis to prevent loose, suitable for high speed reciprocating use;
- Precision linear bearing guide rail (supporting for with the middle suspended), comfortable movement, smaller load, suitable for single axis or vertical use;
- High quality elastic coupling for connecting motor and ball screw rod, synchronous transmission and little noise;

Model	7STA0150B	7STA01100B	7STA01150B	7STA01200B	7STA01300B
Travel	50mm	100mm	150mm	200mm	300mm
Table size	90mm×90mm			120mm×120mm	
Lead for screw rod	4mm				
Resolution(8 subdivision)	0.00125mm			0.0025mm	
Maximum speed(2 subdivision)	20mm/s			40mm/s	
Repeatability	0.005mm				
Axial clearance	0.03mm				
Standard motor	42 stepping(0.9°)			42 stepping motor(1.8°)	
Maximum static torque	0.4N·m				
Rated working current	1.7A				
Central load	15kg		10kg	7kg	5kg
Weight	2.75kg	3kg	3.3kg	3.8kg	4kg